

David Velder, Ph.D.

[dvelder@somsd.k12.nj.us](mailto:dvelder@somsd.k12.nj.us)



# CAP Classes

Columbia High School

# Columbia Academy Program

- Developed to address the needs of students suffering from anxiety and/or depression
- Provides a “soft landing” for students who may be returning to school from an out of district therapeutic program, treatment program, or hospital.

# Columbia Academy Program

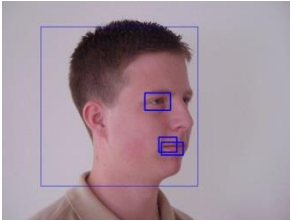
- Students present with emotional issues which preclude them from functioning within a larger high school setting
- Emotional challenges may have resulted in increased feelings of depression and anxiety which may have developed into school avoidance and/or school refusal



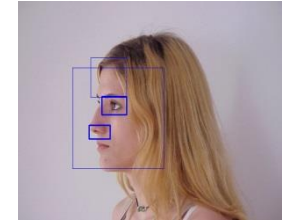
# STUDENT PROFILE



- **ACADEMICALLY CAPABLE**



# STUDENT PROFILE



- ACADEMICALLY CAPABLE
- ABLE TO HANDLE THE MAINSTREAM CURRICULUM



# STUDENT PROFILE



- ACADEMICALLY CAPABLE
- ABLE TO HANDLE THE MAINSTREAM CURRICULUM
- SUFFER FROM ANXIETY and/or DEPRESSION



# STUDENT PROFILE



- ACADEMICALLY CAPABLE
- ABLE TO HANDLE THE MAINSTREAM CURRICULUM
- SUFFER FROM ANXIETY and/or DEPRESSION
- NEED A SMALLER, MORE SUPPORTIVE ENVIRONMENT IN ORDER TO DEMONSTRATE THEIR CAPABILITIES





# STUDENT PROFILE



- ACADEMICALLY CAPABLE
- ABLE TO HANDLE THE MAINSTREAM CURRICULUM
- SUFFER FROM ANXIETY and/or DEPRESSION
- NEED A SMALLER, MORE SUPPORTIVE ENVIRONMENT IN ORDER TO DEMONSTRATE THEIR CAPABILITIES
- MAY HAVE BECOME SCHOOL AVOIDANT OR DEMONSTRATE SCHOOL REFUSAL



# STUDENT PROFILE



- ACADEMICALLY CAPABLE
- ABLE TO HANDLE THE MAINSTREAM CURRICULUM
- SUFFER FROM ANXIETY and/or DEPRESSION
- NEED A SMALLER, MORE SUPPORTIVE ENVIRONMENT IN ORDER TO DEMONSTRATE THEIR CAPABILITIES
- MAY HAVE BECOME SCHOOL AVOIDANT
- MAY HAVE BEEN IN A PHP OR IOP

# TEACHERS



- DUAL CERTIFIED
- FAMILIAR WITH THE MAINSTREAM CURRICULUM
- HAVE AN INTEREST IN AND SENSITIVITY NEEDED TO WORK WITH THIS POPULATION

# CAP OFFERS

- Quality education in a smaller classroom environment where students will be able to build healthy relationships with their peers and with staff members

# CAP OFFERS

- Quality education in a smaller classroom environment where students will be able to build healthy relationships with their peers and with staff members
- Flexibility to deliver challenging content while being sensitive to students' individual academic and emotional needs

# CAP OFFERS

- Quality education in a smaller classroom environment where students will be able to build healthy relationships with their peers and with staff members
- Flexibility to deliver challenging content while being sensitive to students' individual academic and emotional needs
- A “soft landing” for students who have been out of school in a mental health treatment facility

# CAP OFFERS

- Quality education in a smaller classroom environment where students will be able to build healthy relationships with their peers and with staff members
- Flexibility to deliver challenging content while being sensitive to students' individual academic and emotional needs
- A “soft landing” for students who have been out of school in a mental health treatment facility
- The opportunity to enter the school building through an alternative entrance (Academy street)
- Classrooms and lockers located near the Academy Street entrance to ease the student's transition into the classroom

# CAP OFFERS

- Quality education in a smaller classroom environment where students will be able to build healthy relationships with their peers and with staff members
- Flexibility to deliver challenging content while being sensitive to students' individual academic and emotional needs
- A “soft landing” for students who have been out of school in a mental health treatment facility
- The opportunity to enter the school building through an alternative entrance (Academy street)
- Classrooms and lockers located near the Academy Street entrance to ease the student's transition into the classroom
- Can receive credit on the College Prep or Honors Level.



WOW! This sounds great. Now what do I do?

Talk with your child's Child Study Team Case Manager.

